

# TREMPAR

EDITION 01  
[2024]

BATTLE INDEX

# LANCEA

MOUNTED UNIT - MELEE

TREMPLAR  
[TMP-0001]

SPD

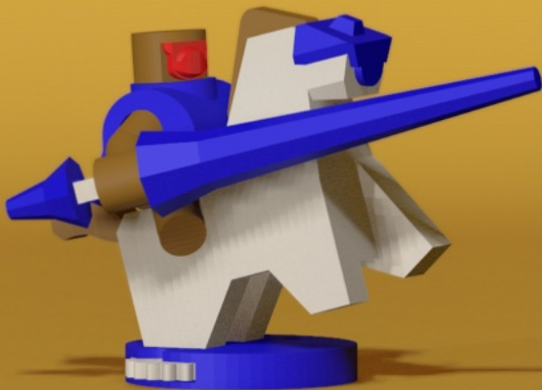
V

HP

4

## BATTLE NATURE:

**Centaur incarnate** If this unit is toppled but not separated from its mount, it immediately rises again with its remaining HP reduced by 1.



# SCUTUM

TREMPLAR  
[TMP-0002]

MOUNTED UNIT - MELEE

SPD

V

HP

4

## BATTLE NATURE:

**Centaur incarnate** If this unit is toppled but not separated from its mount, it immediately rises again with its remaining HP reduced by 1.



# HARPE

MOUNTED UNIT - MELEE

TREMPLAR

[TMP-0003]

SPD

V

HP

4

## BATTLE NATURE:

**Centaur incarnate** If this unit is toppled but not separated from its mount, it immediately rises again with its remaining HP reduced by 1.



# VIRGA

MOUNTED UNIT - MELEE

TREMPLAR

[TMP-0004]

SPD

IV

HP

7

TP

4

## BATTLE NATURE:

**One last charge** When this unit only has 1 HP left, its SPD is increased to 6.

## BATTLE TECH:

**Cyclone furry (1 TP)** Virga will first charge towards the enemy using its mount, and attack twice using its staff. If Virga falls over/toppled, this chain of attack stops immediately.

